

## BYD Battery-Box Premium LV BMU -IP55 Instruction Manual

V1.4

### VALIDITY

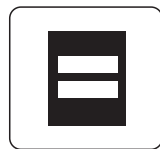
This document is valid for the BYD Battery-Box Premium LV BMU -IP55 (Battery Management Unit) (“BMU”) from firmware version 1.22.

### INTENDED USE

BMU is applicable for the BYD Battery-Box Premium LV system(s)(LV FLEX, LV FLEX LITE, LVS, LVS LITE, LVL) (“**Battery-Box**”), and works as a control unit for the system(s).

### PRODUCT DESCRIPTION

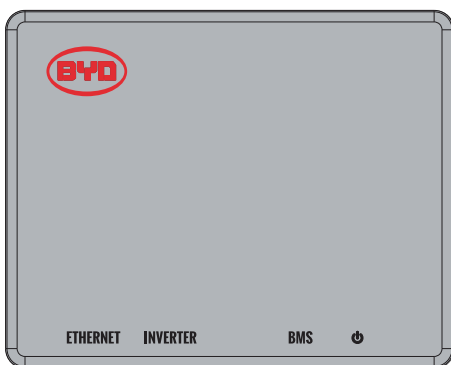
BMU is equipped with WLAN. The APP Be Connect 2.0 could communicate with BMU through the WLAN.



Be Connect 2.0



The WLAN name and password are on the label of BMU.



A B C D

- A: Ethernet port
- B: RJ45 port for connection with an inverter
- C: RJ45 port for connection with Battery-Box
- D: LED Button

## Assignment of Port B



No.	Assignment
1	Unused
2	Unused
3	Unused
4	CAN H
5	CAN L
6	Unused
7	Unused
8	Unused

## SCOPE OF DELIVERY

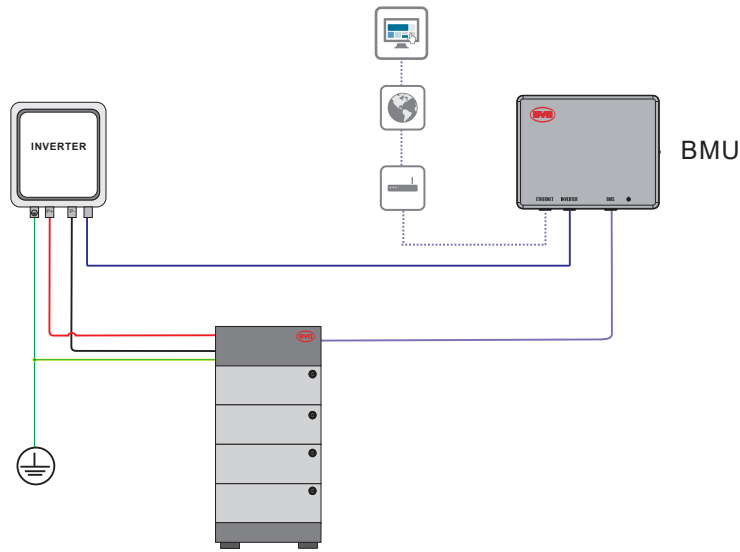
- 1× BMU
- 1× Instruction Manual
- 3× Connectors
- 1× Hanger

## TECHNICAL DATA

Communication	Ethernet/CAN
Input voltage*	40-60 V
Input current	200 mA
Weight	1.3 kg
Dimensions (L×W×H)	220 mm X 60 mm X 176 mm
Ambient temperature in operation	-10°C to 50°C
Relative humidity (non-condensing)	5% to 95%
Degree of protection (in accordance with IEC 60529)	IP55

\*BMU is powered by Battery-Box through the network cable. No other power supply is needed.

## CONNECTION DIAGRAM

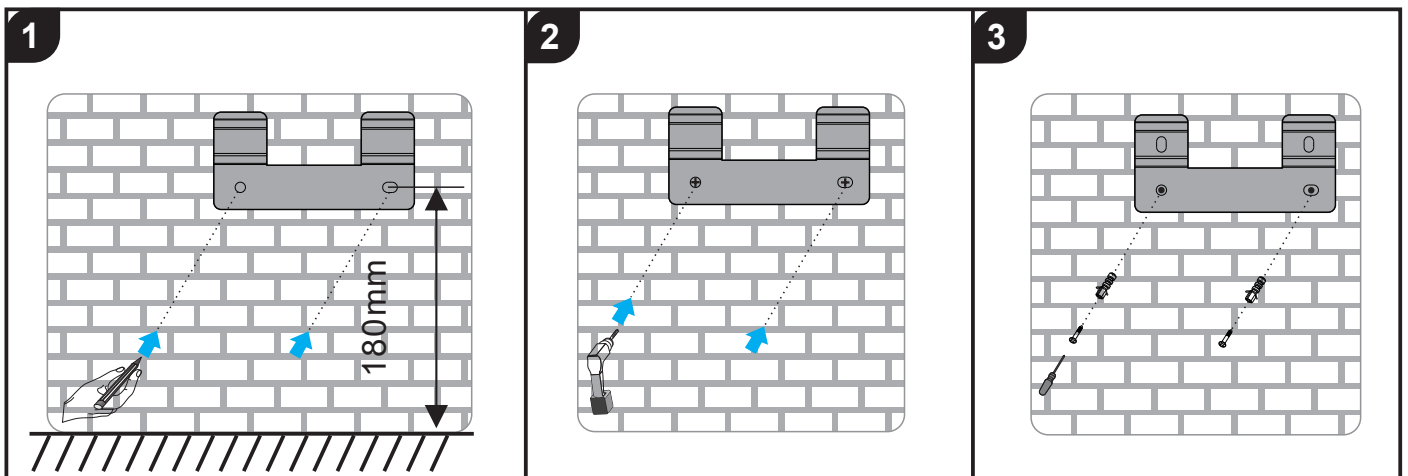


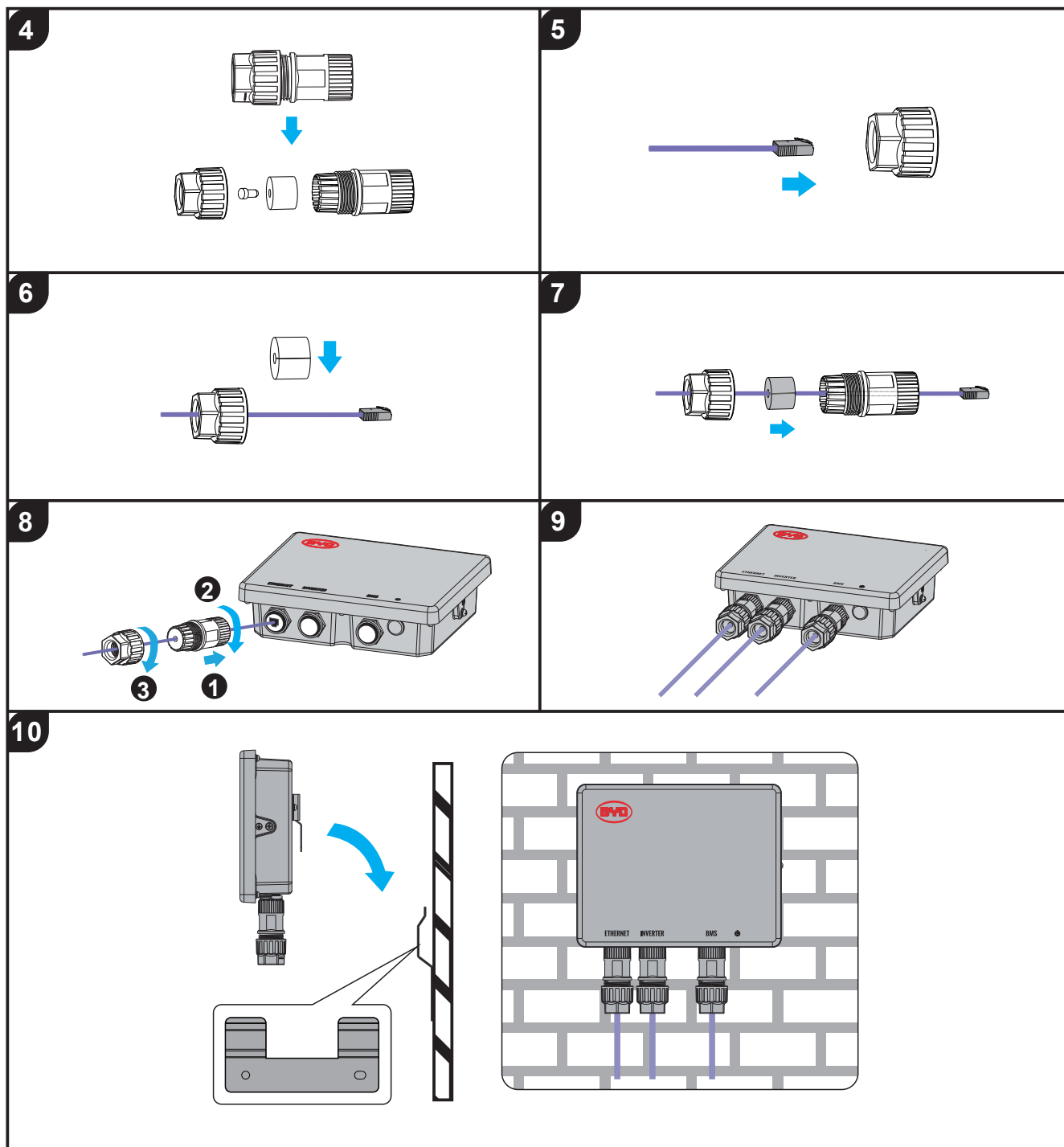
	BMU	SMA	STUDER	VICTRON	SELECTRONIC	SOLAREEDGE	GOODWE	SUNGROW	SCHNEIDER	SOLIS	Deye
CAN H	4	4	4	7	1	4	4	4	14	4	4
CAN L	5	5	5	8	2	5	5	5	12	5	5

- Detailed connection instructions with inverters could be read in the Battery-Box Quick Start Guide.
- The communication cable between BMU and an inverter cannot be longer than 20 meters. And the cable should be CAT 5 shield or above.
- Please make sure the correct pins are connected between BMU and an inverter.
- The connection between BMU and Battery-Box should be the Straight-Through Wired Cable.
- Connected to the Internet is highly recommended.
- The WLAN of BMU will switch off in 5 hours from turning on.  
Press the LED Button once when BMU is on could activate the WLAN again.  
Press the LED Button three times in six seconds, each time around 1 second could reset the WLAN.

## MOUNTING AND CONNECTION

Install BMU on the wall or a rack. The recommended expansion screw size is M6×12. The minimum distance from the ground is 180 mm.





## COMMISSIONING

1. Make sure an inverter, Battery-Box, and BMU are correctly connected.
2. Press the LED Button on Battery-Box for 3 seconds.
3. Refer to Battery-Box Operating Manual for further steps.

## UPDATING FIRMWARE

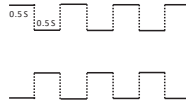
The firmware of BMU could only be updated when it operates with Battery-Box. Please refer to Battery-Box Operating Manual for further information.

## LED STATUS

Flashing white and blue alternatively

White  ON  
OFF

Blue  ON  
OFF

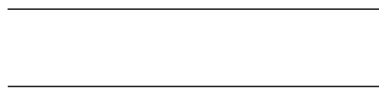


The battery system is initiating.

Static white

White  ON  
OFF

Blue  ON  
OFF

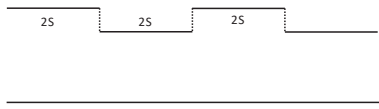


Idle ( the battery system is neither charging nor discharging).

Flash ing white slowly

White  ON  
OFF

Blue  ON  
OFF

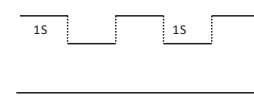


The battery system is charging.

Flashing white quickly

White  ON  
OFF

Blue  ON  
OFF

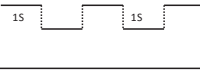


The battery system is discharging.

Flashing white and glowing blue

White  ON  
OFF

Blue  ON  
OFF

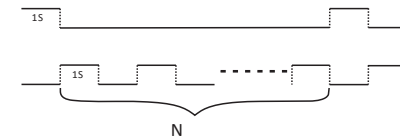


The battery system is discharging, and the SOC of Battery-Box is below 15%.

Flashing white and blue

White  ON  
OFF

Blue  ON  
OFF



An error has occurred\*\*

\*\* When an error happens, refer to the Operating Manual of the corresponding Battery-Box for more details.

## DISPOSAL

Following the applicable regulations for electronic waste to dispose of BMU.